

PROJECT INFORMATION

Job Name _____
 Fixture Type _____
 Catalog Number _____
 Approved by _____

PRODUCT FEATURES:

- » Ceiling mount – 8"×48", 8"×60", 12"×48"
- » Exam light with asymmetric optics for shadow-free illumination
- » Ingress Barrier Door provides consistent surface for cleanability



SPECIFICATIONS:

HOUSING: FLANGE AND GRID: 20-gauge CRS one-piece seam welded construction. SURFACE: 18-gauge CRS one-piece seam welded construction. Housing flange (Flange/Grid): 18-gauge CRS, standard 4-piece construction, spot welded to housing. White TGIC polyester powder coat – 5-stage pre-treatment. Salt spray test: 1,000 hours; reflectance: 92%.

DOORFRAME: Heavy duty extruded aluminum with clear satin anodized finish. Doorframe supported to housing with aircraft cables (IB-AC) to provide NSF2 listing, or an optional continuous hinged doorframe (IB-HD). Select in ordering options below. Phillips head stainless steel fasteners secure door to housing – 8 on IB-AC option; 3 on IB-HD option.

GASKET: Closed cell silicone gasket seals door to housing.

LAMP SHIELDING: Perforated steel (white TGIC polyester powder coat finish) with pearlescent diffuser.

FASTENERS: Torx® head with center pin hardened security screws. Fully recessed.

ELECTRICAL: Fluorescent electronic 120-277V ballasts high power factor (<10% THD). See Ordering Information for optional equipment. Lamps by others.

INSTALLATION: SURFACE MOUNT: Four .312" diameter holes. GRID MOUNT: Designed for 1" grid. Includes hardware to secure hanger wire. FLANGE MOUNT: – Yoke brackets: Fixture mounting hardware included. Install Frame (Accessory): Positively locates yoke brackets within ceiling opening; assures alignment of fixture. No measuring for yoke required; no drywall backing required (included with frame assembly).

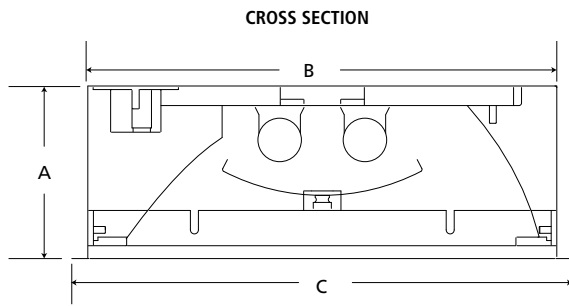
LISTINGS: UL and CUL Listed for Wet Location and UL certified IP65 per IEC 60598. NSF2 Splash/Non-Food Zone (IB-AC only).



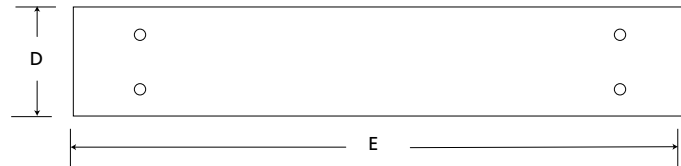
ORDERING INFORMATION (Ex: MEC12-48-S-2-32-IS-120-IB-AC)

Model	Length	Mounting Options	Lamp Qty	Lamp Type	Ballast Type	Voltage	Doorframe	Options	Accessory
IB-									
Model	Lamp Quantity		Ballast Type		Options				
MEC8 8"	1 One Lamp		IS Instant Start Electronic, 10% THD (T8)		AMF Antimicrobial Finish on exposed surfaces				
MEC12 12"	2 Two Lamps		RS Rapid Start Electronic, 10% THD (T8,T5, T5H0)		FS Fuse & Holder				
Nominal Length	Lamp Type		Voltage		LVC[▲] Low Voltage Controller (See Application Guide or consult factory for switching options)				
48 4'	4' Lengths		120 120 Volts		Accessory IF Install Frame (Flange only)				
60 5' (MEC8 only)	28 [▲] F28T5		277 277 Volts						
	32 F32T8 (MEC12 only)		347 347 Volts						
Mounting Options	5' Lengths (MEC8 only)		Doorframe		▲n/a with 347V				
S Surface	35 [▲] F35T5		AC Ingress Barrier w/Aircraft Cables (Std.)						
G Grid (1")	80 F80T5H0		HD Ingress Barrier w/Continuous Piano Hinge (not NSF2 listed)						
F Flange									

DIMENSIONAL DATA



**RECOMMENDED CEILING CUTOUT/
SURFACE MOUNTING HOLES**



DIMENSIONAL DATA (IN INCHES)

	A	B	C	D	E
MEC848 (T5)	3.25	8.00×47.00	8.75×47.75	8.25**	47.25
MEC860 (T5)	3.25	8.00×59.00	8.75×59.75	8.25**	59.25
MEC12 (T5)	4.25	11.00×47.00	11.75×47.75	11.25**	47.25
MEC12 (T8)	4.25	11.00×48.75	11.75×49.50	11.25**	49.00

**Add .25" to each cut-out dimension when Install Frame (IF) Accessory is specified

