

Integris® C Series Headwall System and Equipment Rail Accessories

Edited 7-25-17



WittRock
Mounting Levels



Integris 2001C

- 2001C Upper
- 2001C Lower
(Lower Accessory Rail accessory as shown on next page)

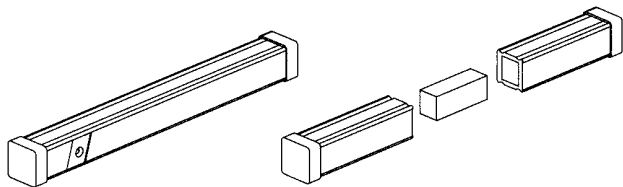


Integris 2002C

- 2002C Upper
- 2002C Lower

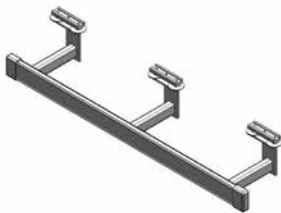


Integris 2003C Light Rail



Equipment Rail

WittRock
Accessory Rails



Lower Accessory Rail for 2001C Headwall

Add horizontal accessory bar for extra level of equipment management. Accessories on Product/Position matrix that are compatible with 2001B Lower Rail require purchase and installation of this product. Wilsonart 1572-60. Antique White laminate provided.

Available lengths:

- P17080001157 Accessory Rail - 9"
- P17080002157 Accessory Rail - 12"
- P17080003157 Accessory Rail - 15"
- P17080004157 Accessory Rail - 18"
- P17080005157 Accessory Rail - 21"
- P17080006157 Accessory Rail - 24"
- P17080007157 Accessory Rail - 27"
- P17080008157 Accessory Rail - 30"
- P17080009157 Accessory Rail - 33"
- P17080010157 Accessory Rail - 36"
- P17080011157 Accessory Rail - 39"
- P17080012157 Accessory Rail - 42"
- P17080013157 Accessory Rail - 45"
- P17080014157 Accessory Rail - 48"
- P17080015157 Accessory Rail - 51"
- P17080016157 Accessory Rail - 54"
- P17080017157 Accessory Rail - 57"

2001C/Upper	2001C/Lower*	2002C/Upper	2002C/Lower	2003C/Light Rail	Equipment Rail
	●				

*Requires purchase and installation of Lower Accessory Rail shown on page 3.

WittRock

IV Pole Management Solutions



P53321193000 Ventilator Mount
16" arm, adjustable pole



P17000901 Resuscitator Bag Holder - Clip Style



P53321121000 Holders



P17001001 IV Holder
Hook allows for hanging of IV bags.
Functional loading up to 10 lbs (5 lbs per hook).



P17000101 ISS Transfer Pole Mount
Designed to accommodate the ISS Transfer Pole (P158A).

	2001C/Upper	2001C/Lower*	2002C/Upper	2002C/Lower	2003C/Light Rail	Equipment Rail
P53321193000 Ventilator Mount						●
P17000901 Resuscitator Bag Holder - Clip Style	●		●			
P53321121000 Holders	●	●	●	●	●	●
P17001001 IV Holder	●	●	●	●	●	●
P17000101 ISS Transfer Pole Mount	●		●			

*Requires purchase and installation of Lower Accessory Rail shown on page



P17000301 Single Pole

24", 1/2" diameter. Functional loading up to 20 lbs.
(Mount Included)



P17000601 Universal Holder

Designed to accept various accessories.



P17000701 Universal Pole Holder

(C-Clamp) Accepts poles from 3/4" to 1" in diameter.
Designed to accommodate the P158A ISS Transfer Pole.

	2001C/Upper	2001C/Lower*	2002C/Upper	2002C/Lower	2003C/Light Rail	Equipment Rail
P17000301 Single Pole	●		●			
P17000601 Universal Holder	●	●	●	●	●	●
P17000701 Universal Pole Holder	●	●	●	●	●	●

*Requires purchase and installation of Lower Accessory Rail shown on page 3.

WittRock
Cord Management



P17072001 Cable Organizer



P17073001 Vertical Cord Wrap



P17073101 Horizontal Cord Wrap

	2001C/Upper	2001C/Lower*	2002C/Upper	2002C/Lower	2003C/Light Rail	Equipment Rail
P17072001 Cable Organizer	●	●	●	●	●	●
P17073001 Vertical Cord Wrap	●		●			●
P17073101 Horizontal Cord Wrap	●	●	●	●	●	●

*Requires purchase and installation of Lower Accessory Rail shown on page 3.

WittRock
Storage Solutions



P17011101 Chart Holder
13"W x 10"H.



P17012001 Sharps Container Mount
P17012002X02 Sharps Mount for
Equipment Rail

Fits most containers.



P17012002 Sharps Container
Secured by screw set. Includes set of 2 as shown.



P17013001 Glove Box Holder
Holds 3 boxes, size adjustable.



P53321207000 Glove Box Holder
Holds 2 boxes. 4"D x 6"W x 18"H.

2001C/Upper	2001C/Lower*	2002C/Upper	2002C/Lower	2003C/Light Rail	Equipment Rail
●		●			●
	●		●		
		●			
			●		
		●			
					●

*Requires purchase and installation of Lower Accessory Rail shown on page 3.

WittRock

Baskets



P17010101 Basket - Stackable

21-3/8"W x 2-7/8"D x 4-5/16"H Functional loading to 5 lbs.
Basket stacks with Chart Holder P17011001 and Shelf P17020101.
(Basket mounts up and over rail.)

P17010102 Basket Equipment Rail Mounted (Front of Rail)



P17010201 Basket

18"W x 9-1/2"D x 4"H Functional loading to 10 lbs.
Includes three dividers. (Basket mounts up and over rail.)



P17010202 Basket

18"W x 9-1/2"D x 4"H Functional loading to 10 lbs.
Includes three dividers. (Basket mounts in front of rail.)



P17010301 Basket

6-1/2"W x 5-1/2"D x 5"H Functional loading to 5 lbs.
(Basket mounts up and over rail.)

2001C/Upper	2001C/Lower*	2002C/Upper	2002C/Lower	2003C/Light Rail	Equipment Rail
●		●			
●		●			
●	●	●	●	●	●
●		●			

*Requires purchase and installation of Lower Accessory Rail shown on page 3.



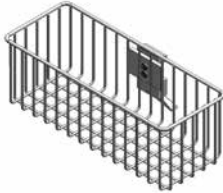
P17010302 Basket

6-1/2"W x 5-1/2"D x 5"H Functional loading to 5 lbs.
(Basket mounts in front of rail.)



P17010401 Basket

11"W x 4"D x 4"H Functional loading to 5 lbs.
(Basket mounts up and over rail.)



P17010402 Basket

11"W x 4"D x 4"H Functional loading to 5 lbs.
(Basket mounts in front of rail.)



P17010501 Basket - Pivoting

9-9/16"W x 9-9/16"D x 4"H Functional loading to 5 lbs.
Designed to pivot. Inner liner is provided to contain supplies.

	2001C/Upper	2001C/Lower*	2002C/Upper	2002C/Lower	2003C/Light Rail	Equipment Rail
P17010302 Basket	●	●	●	●	●	●
P17010401 Basket	●		●			
P17010402 Basket	●	●	●	●	●	●
P17010501 Basket - Pivoting	●	●	●	●	●	●

*Requires purchase and installation of Lower Accessory Rail shown on page 3.

WittRock Shelves



P17020101 Utility Shelf

Laminate: Wilsonart 1572-60 Antique White
20-3/8"W x 12-1/8"D. Functional loading up to 50 lbs.
Stacks with Basket P17010101 and Chart Holder P17011001.



P17020201 Charting Shelf

Laminate: Wilsonart 1572-60 Antique White
20-3/8"W x 12-1/8"D. Functional loading up to 50 lbs.



P17020501 Utility Shelf

Laminate: Wilsonart 1572-60 Antique White 12"W x 10"D
Functional loading up to 15 lbs.



P53301021000 Shelf

Aluminum tray, 13-3/4" W x 13-1/4"D



P53301051000 Shelf

Aluminum tray, 19-1/2"W x 13-1/4"D



P17020301 Small Mayo Tray

Stainless steel tray 13-5/8"W x 9-3/4"D Tray folds down easily when not in use. Functional loading up to 15 lbs.



P17020401 Large Mayo Tray

Stainless steel tray 17-1/8"W x 11-5/8"D Tray folds down easily when not in use. Functional loading up to 15 lbs.

2001C/Upper	2001C/Lower*	2002C/Upper	2002C/Lower	2003C/Light Rail	Equipment Rail
●		●			
●		●			
				●	
					●
					●
●		●		●	
●		●		●	

*Requires purchase and installation of Lower Accessory Rail shown on page 3.

WittRock

Lights



P17030201 Exam Light Mount

Only for Exam Plus Light.



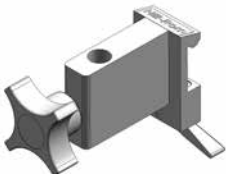
P17030501 Utility Light

4-1/2" arm. Includes mount. 24" Cord length.



P963D01 Arm Lamp with Incandescent Bulb

Arm extends to 46". Requires power outlet and Universal Light Mount (P17030701). 13" Cord length.



P17030701 Universal Light Mount

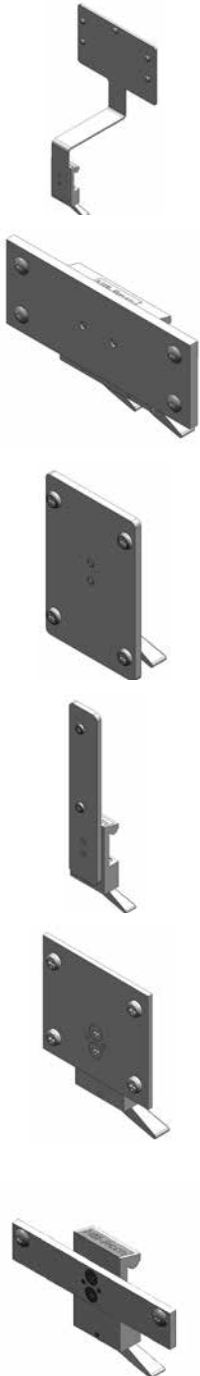
(Not for use with Burton Lights) Accepts standard post-mount lights. 9/16" hole diameter.

2001C/Upper	2001C/Lower*	2002C/Upper	2002C/Lower	2003C/Light Rail	Equipment Rail
				●	●
●		●		●	●
●		●			●
●		●			●

*Requires purchase and installation of Lower Accessory Rail shown on page 3.

WittRock

Sphygmomanometers and Other Diagnostic Equipment Mounting Solutions



P17040101 Integrated Diagnostic System - 767

For Welch Allyn® Model 767 only. 9-3/16"W x 2-1/2"D x 7"H.

P53321210000 Integrated Diagnostic System - 767

For Welch Allyn® Model 767. 9-3/16"W x 2-1/2"D x 7"H. Adapter for Horizontal Style.

P17040201 Integrated Diagnostic System - 747

For Welch Allyn® Model 747 only. 2-3/4"W x 4-1/4"H.

P17040401 Speculum Mount

For Welch Allyn® Dispensers only.

P53321213000 Blood Pressure Gauge Mount

Tycos® Model 5091-38. Mount only. Hardware for mounting Tycos® Aneroid Sphygmomanometer (adapter, plate and hardware).

P54000863000 Blood Pressure Gauge Mount

Tycos® Model 7670-01. Aneroid, mount only.

2001C/Upper	2001C/Lower*	2002C/Upper	2002C/Lower	2003C/Light Rail	Equipment Rail
●		●			
					●
●		●		●	
●		●		●	
					●
					●

*Requires purchase and installation of Lower Accessory Rail shown on page 3.



P17041301 for Tycos® Model 7670-01 Aneroid Sphygmomanometer and DIATEK 6000/9000 Thermometer Mount



P53311030000 Cuff Basket with Mount



P17041601 Cuff Basket

Includes P17041701 mount.



P17041701 Cuff Basket Mount

P17040201X01 Sure Temp Mount for Equipment Rail

P17041201X01 Aneroid Sphgyomo 767

2001C/Upper	2001C/Lower*	2002C/Upper	2002C/Lower	2003C/Light Rail	Equipment Rail
●		●			
					●
●		●			
●		●			

*Requires purchase and installation of Lower Accessory Rail shown on page 3.

WittRock

Sphygmomanometers and Other Diagnostic Equipment Mounting Solutions



P17041801 Utility Hook



P17044001 Stat Clock Timer

Designed to provide easy-to-read numbers and accurate timekeeping. Provides the time, date and elapsed time mode for code blue situations. Includes mount. Power and signal connections from Headwall required.



P17043001 Conchatherm Humidifier & Heater Mount

Slide Adapter only.



P17043101 Puritan-Bennett Humidifier Holder

For Cascade humidifier. Post is 4" high, 1-1/2" diameter.

	2001C/Upper	2001C/Lower*	2002C/Upper	2002C/Lower	2003C/Light Rail	Equipment Rail
P17041801 Utility Hook	●	●	●	●	●	●
P17044001 Stat Clock Timer	●		●		●	
P17043001 Conchatherm Humidifier & Heater Mount	●		●			●
P17043101 Puritan-Bennett Humidifier Holder	●		●			●

*Requires purchase and installation of Lower Accessory Rail shown on page 3.

WittRock
 Mounting Adapters



P17074001 Standard Cam Adapter

Utilizes one locking lever.



P17074101 Ball-Action Adapter

Must be secured in place with a 7/32" hex wrench.



P17074201 Double Cam Adapter

For mounting heavier equipment - utilizes two locking levers.

2001C/Upper	2001C/Lower*	2002C/Upper	2002C/Lower	2003C/Light Rail	Equipment Rail
●	●	●	●	●	●
●	●	●	●	●	●
●	●	●	●	●	●

*Requires purchase and installation of Lower Accessory Rail shown on page 3.

WittRock

Monitor and TV
Mounting Solutions



P17050101 Monitor Channel

For placement of monitoring equipment. Information about type of monitor is required. Use in combination with P962-00 or P997L00. Accessory must be attached to both a Headwall and a Light Rail.

2001C/Upper	2001C/Lower*	2002C/Upper	2002C/Lower	2003C/Light Rail	Equipment Rail
●		●		●	

*Requires purchase and installation of Lower Accessory Rail shown on page 3.



P129244 Xtend® Corner Track GCX Channel Mount

4" GCX channel mounted in the service head vertical track. Available on all service heads.

P129177 Xtend® Rail to Rail GCX Channel Mount for 1025 ICU front

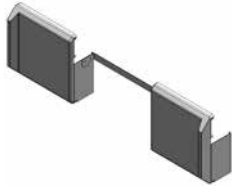
14" GCX Channel spanning the top horseshoe rails. Available on front of the 1025ICU service head only. Does not allow placement of nurse call or the top 4 gas outlets on front of head.

2001C/Upper	2001C/Lower*	2002C/Upper	2002C/Lower	2003C/Light Rail	Equipment Rail
					●
					●

*Requires purchase and installation of Lower Accessory Rail shown on page 3.

WittRock

Bed Bumpers, Slides/Blenders and Clips



P17060101 Bed Bumpers

Dimensions 11-1/4"W x 11-1/4"H.
Extension from wall 7/8" - 1-5/8".



P1020IN3 Bottle Slide

Mounts in lower key track on 2001B.



P17071001 Dual Clip Assembly



P17070101 Standard Slide Adapter

1-3/16" inner width.



P17070201 Bird™ Blender Slide

Used to mount oxygen blenders, bottle holders, suction canisters and other slide-mounted devices. Adapter for Bird Blenders.



P17070301 Bird™ Blender Slide

Adapter used to mount oxygen blenders, bottle holders, suction canisters and other slide mounted devices. Adapter for Bird Blender (above rail).

	2001C/Upper	2001C/Lower*	2002C/Upper	2002C/Lower	2003C/Light Rail	Equipment Rail
P17060101 Bed Bumpers				●		
P1020IN3 Bottle Slide		●				
P17071001 Dual Clip Assembly					●	●
P17070101 Standard Slide Adapter	●	●	●	●	●	●
P17070201 Bird™ Blender Slide	●		●			●
P17070301 Bird™ Blender Slide	●		●			

*Requires purchase and installation of Lower Accessory Rail shown on page 3.

WittRock
 Gas Outlet Guards



Gas Protector

Available lengths:

- P20630801 Gas Protector - 8"
- P20630802 Gas Protector - 12"
- P20630803 Gas Protector - 16"
- P20630804 Gas Protector - 20"
- P20630805 Gas Protector - 24"
- P20630806 Gas Protector - 28"
- P20630807 Gas Protector - 32"
- P20630808 Gas Protector - 36"
- P20630809 Gas Protector - 40"



Gas Protector

Available lengths:

- P20630901 Gas Protector - 8"
- P20630902 Gas Protector - 12"
- P20630903 Gas Protector - 16"
- P20630904 Gas Protector - 20"
- P20630905 Gas Protector - 24"
- P20630906 Gas Protector - 28"
- P20630907 Gas Protector - 32"
- P20630908 Gas Protector - 36"
- P20630909 Gas Protector - 40"

2001C/Upper	2001C/Lower*	2002C/Upper	2002C/Lower	2003C/Light Rail Equipment Rail
	●			
			●	

*Requires purchase and installation of Lower Accessory Rail shown on page 3.

WittRock

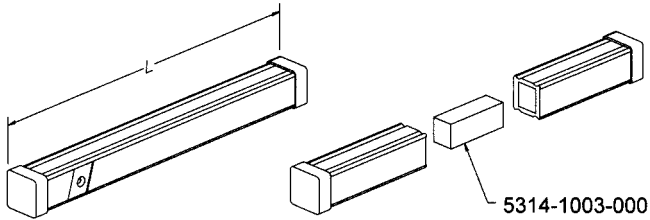
Medical Equipment Rail

Medical Equipment Rail

Includes end caps, laminate. Drilling standard: 16" OC unless otherwise noted.

Specify:

- 1. Stock number
- 2. Laminate color
Standard: Wilsonart 1572-60 "Antique White"
Other: Choose any color by Wilsonart or Nevamar
- 3. Specify whether drilled at factory or field



Length	Qty. of Hardware Needed per Rail
2'0"	2
3'0"	3
4'0"	3
5'0"	4
6'0"	5
7'0"	6
8'0"	6
9'0"*	7
10'0"**	8

* Maximum one piece rack is 9'0".

** 10'0" shall consist of two 5'0" lengths and include one joiner.

Price of joiner is included in P5312-1120-000.

WittRock

Equipment Rail Information

Medical Equipment Rail

Heavy Duty Rail P5312-A

Length Required:

Qty.	Length	Joiners	End Caps
_____	_____	_____	_____
_____	_____	_____	_____
_____	_____	_____	_____
_____	_____	_____	_____
_____	_____	_____	_____
_____	_____	_____	_____

Note: Joiners required for lengths over 8'-0"

Drilling Requirements:

- No Drilling, Lam, HPL finish, Antique White
- Special

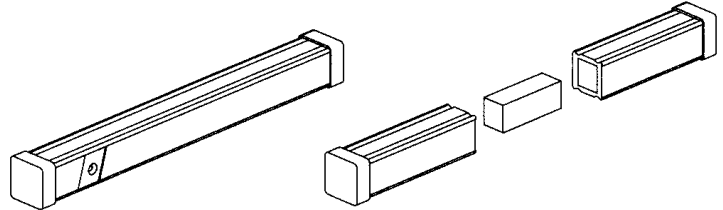
Mounting Hardware:

Drywall:

- 1-1/8" flush
- 1-3/4" small standoff
- 2-3/4" large standoff

Masonry:

- 1-1/8" flush
- 1-3/4" small standoff
- 2-3/4" large standoff



Metal Stud*:

- 1-1/8" flush
- 1-3/4" small standoff
- 2-3/4" large standoff

**Use only these options in seismically active areas.*

Quantity: _____

HPL finish of Equipment Rail: _____

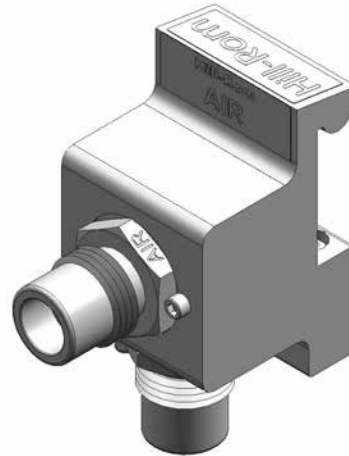
(Standard: Wilsonart 1572-60 "Antique White" unless otherwise noted)

WittRock

Gas Blocks

Gas Blocks for Equipment Rail DISS Only

Stock Number	Domestic
P205500A	Air
P205500O	Oxygen
P205500V	Vacuum





WittRock reserves the right to make changes without notice in design, specifications and models. The only warranty WittRock makes is the express written warranty extended on the sale or rental of its products.

©2016 WittRock Services, Inc. ALL RIGHTS RESERVED.
CTG226rb rev 4 16-AUG-2016 ENG – US

For further information about this product or a service, please contact your local **WittRock** representative or visit our webpage:

812.222.0373

www.WittRockhc.com